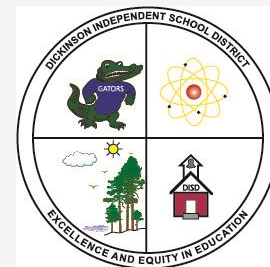


Dickinson Independent School District

# BOND



- *2014 Bond Proposal*
- *Student Enrollment*
- *Bond Accomplishments*
- *Voting Information*



[www.dickinsonisd.org](http://www.dickinsonisd.org)

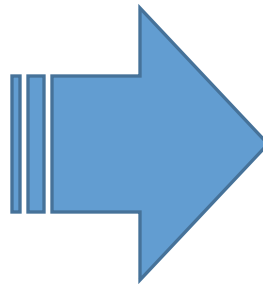
## Student Enrollment Continues to Grow

Dickinson ISD is an extremely fast-growing district. In the past 10 years, Dickinson ISD has grown by almost 4,000 students. The district is projected to surpass 10,000 students at the beginning of the 2014-2015 school year.

**THEN**

2003-2004

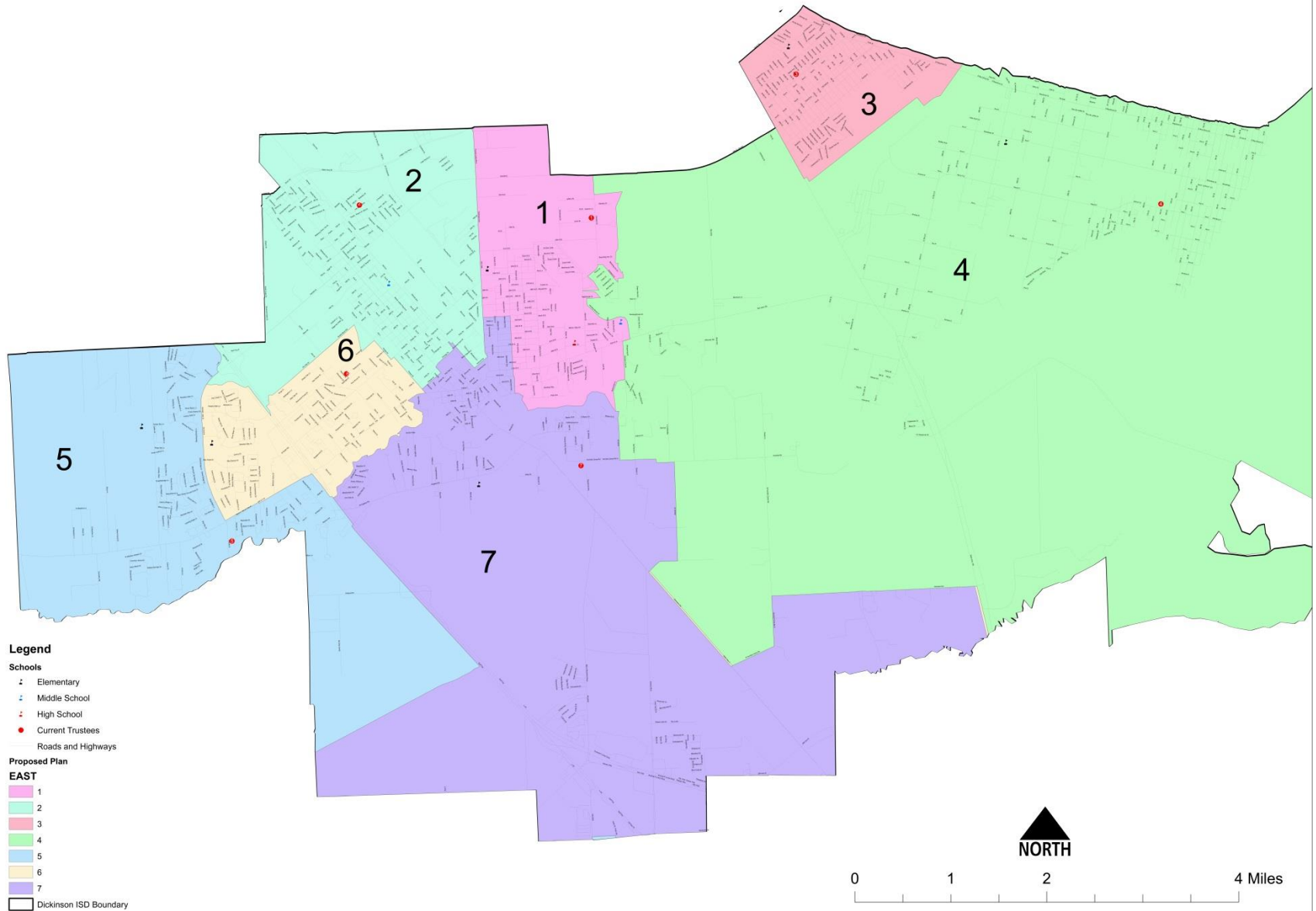
6,064 students

**THEN**

2013-2014

9,900 students

# DICKINSON ISD BOND 2014



## Dickinson ISD Boundaries

- The district covers 61 square miles.
- The district covers much more than just the City of Dickinson boundaries.

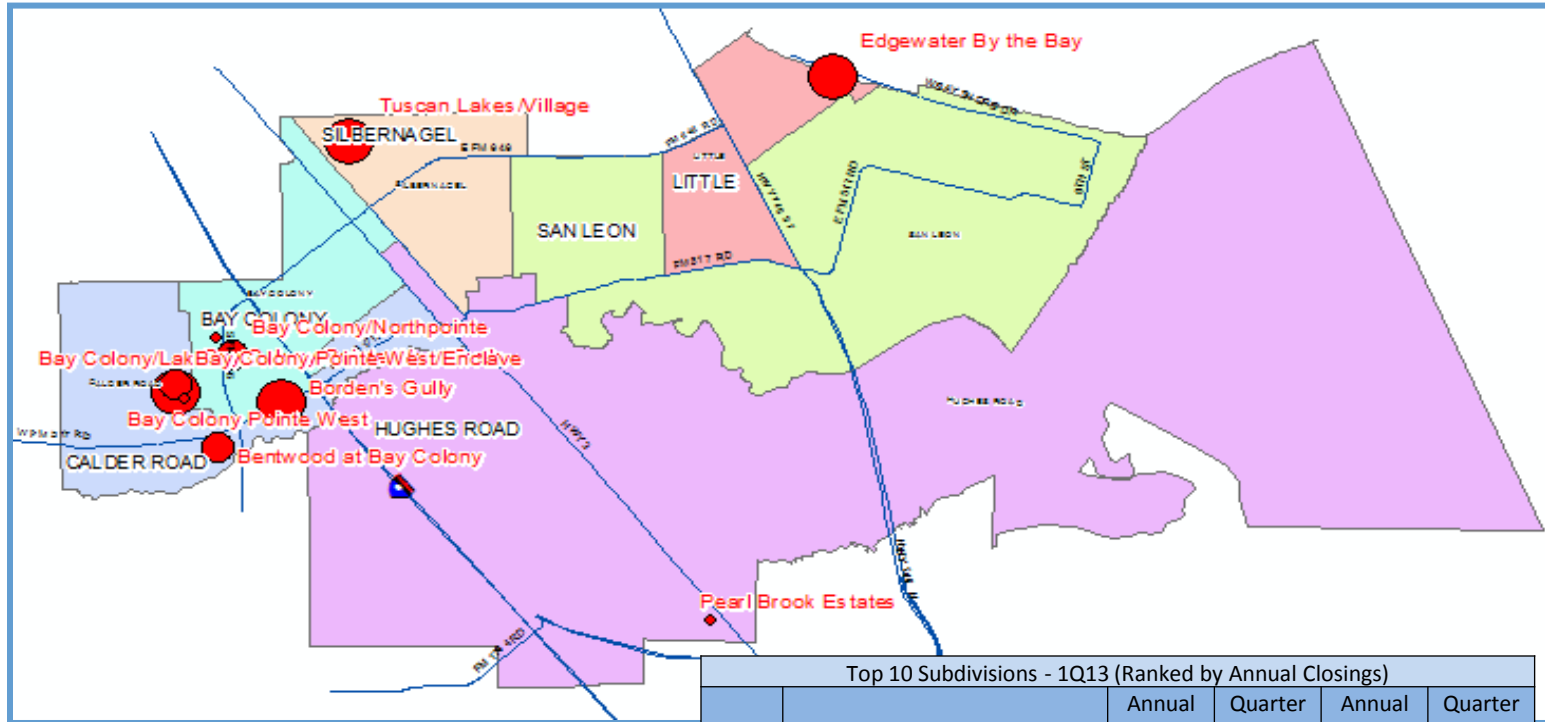
South border – all the way to the Gulf Greyhound Dog Track on both sides of the freeway

North border – portions of Tuscan Lakes on the north and south sides of Highway 96

East border – Galveston Bay including the communities of Bacliff and San Leon

West border – up to Cemetery Road and including all the new communities in the Bay Colony and Calder Road area

## Annual Closing Distribution



Top 10 Subdivisions - 1Q13 (Ranked by Annual Closings)

Rank	Subdivision	Annual Starts	Quarter Starts	Annual Closings	Quarter Closings
1	Tuscan Lakes/Village	39	18	24	6
2	Edgewater By the Bay	29	2	23	6
3	Bay Colony Pointe West/Trails	24	10	22	5
4	Borden's Gully	9	0	20	5
5	Bay Colony Pointe West/Enclave	20	0	17	11
6	Bay Colony/Northpointe	37	20	16	10
7	Bentwood at Bay Colony	21	5	15	5
8	Bay Colony Pointe West	6	0	12	1
9	Pearl Brook Estates	22	7	10	5
10	Bay Colony/Lakes	13	5	10	5
	TOTALS	220	67	169	59



## Housing Data by Elementary Zone

Elementary Zone	Annual Starts	Quarter Starts	Annual Closings	Quarter Closings	Inventory	Vacant Dev. Lots	Future Lots
BAY COLONY ELEM Total	88	29	71	25	47	223	7
CALDER ROAD ELEM Total	84	20	72	24	40	147	790
HUGHES ROAD ELEM Total	25	7	16	8	15	169	497
LITTLE ELEM Total	29	2	23	6	11	237	0
SAN LEON ELEM Total	0	0	0	0	0	3	0
SILBERNAGEL ELEM Total	46	18	40	6	24	23	88
<b>Grand Total</b>	<b>272</b>	<b>76</b>	<b>222</b>	<b>69</b>	<b>137</b>	<b>802</b>	<b>1,382</b>

\* Inventory = models + finished vacant lots + under construction

- Bay Colony and Calder Road with the highest amount of new home activity.
- Calder Road and Hughes Road with the highest amount of future lots.

# Elementary and Middle School Capacity

	<b>Capacity</b>	<b>2013-2014</b>	<b>2016-2017</b>	<b>2019-2020</b>
Bay Colony	750	794	878	936
Calder Road	750	781	936	996
Hughes Road	750	696	778	851
K.E. Little	750	686	737	745
San Leon	750	788	796	807
Silbernagel	750	746	787	823
<b>TOTAL ELEMENTARY SCHOOL</b>	4,500	4,491	4,912	5,158
Barber	650	679	754	820
Dunbar	650	758	810	983
<b>TOTAL MIDDLE SCHOOL</b>	1,300	1,437	1,564	1,803



## **Bond Accomplishments**

Dickinson ISD voters have been very supportive of the district over the past few years by approving bond issues to build new facilities and renovate existing campuses and support departments to accommodate the district's growing student enrollment.

2005 Bond - \$85 million

2007 Bond - \$107.5 million

## 2005 Bond - \$85 million



San Leon Elementary – opened August 2007



Barber Middle School – opened August 2008



McAdams Junior High – opened February 2009



Sam Vitanza Stadium – opened September 2007



First phase of Barry Lussier Field House – opened September 2007



Other Improvements – new furniture and equipment for all new facilities

# DICKINSON ISD BOND 2014

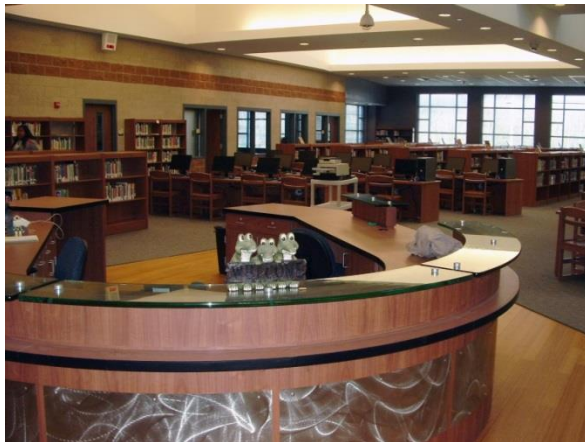


*San Leon  
Elementary*



*Barber Middle School*

## *McAdams Junior High*





## *Sam Vitanza Stadium*



## 2007 Bond - \$107.5 million



Dickinson High School - \$40 million in expansion and renovations



Calder Road Elementary – opened in August 2010



Education Support Center – opened in March 2011



Transportation Department, Food and Nutrition Services DCC/DALC, Technology Department – renovation and new facilities – all opened Spring 2012



Other Improvements – Gator Academy renovation, Silbernagel and Hughes Road renovations, new playgrounds at Hughes Road and K.E. Little, district-wide technology upgrades, new furniture and equipment for all new facilities

# DICKINSON ISD BOND 2014

## New Barry Lussier Field House



Field House Lobby



Tennis Courts



Baseball Field



# DICKINSON ISD BOND 2014



Triple-Design Competition Gymnasium  
and two-story academic wing



Band Hall



Large Group Instruction Room

A portion of the Career and  
Technology wing renovation



Agricultural Science Facility





# DICKINSON ISD BOND 2014



## **2014 Bond Proposal**

The Dickinson Independent School District Board of Trustees has unanimously called for a \$56 million district bond election.

The proposal calls for the construction of two new campuses in the district. Both campuses will help accommodate the district's growing student enrollment.



**Elementary  
School #7**

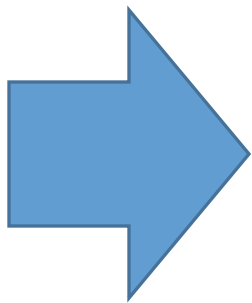


**Middle  
School #3**

## Tax Rate Projections

If approved by voters, the cost of the 2014 Bond is projected to add no more than 3.3 cents per \$100 valuation, which in the case of an **\$100,000 home would cost \$2.75 per month.**

However, based on rising home values and increased commercial and residential growth in the area, it is projected that this number could be significantly lower when the bonds are sold.



Taxpayers age 65 or older who have filed for exemption would see **NO** increase in their school taxes as a result of this bond issue, providing there is not an improvement to the residence that increases the taxable value.

## Branch Voting Opportunities

*Branch voting will be available from 5:30-8:30 p.m. on the following nights.  
Picture identification or a voters registration card are required in order to vote.*

<b><u>Monday, April 28, 2014</u></b> McAdams Junior High 11415 Hughes Road, Dickinson	<b><u>Friday, May 2, 2014</u></b> San Leon Elementary 2655 Broadway, San Leon
<b><u>Tuesday, April 29, 2014</u></b> Calder Road Elementary 6511 Calder Road, Dickinson	<b><u>Monday, May 5, 2014</u></b> Bay Colony Elementary 101 Bay Colony Elem. Drive, Dickinson
<b><u>Wednesday, April 30, 2014</u></b> Hughes Road Elementary 11901 Hughes Road, Dickinson	<b><u>Tuesday, May 6, 2014</u></b> McAdams Junior High 11415 Hughes Road, Dickinson
<b><u>Thursday, May 1, 2014</u></b> Dickinson High School 3800 Baker Drive, Dickinson	

## Early Voting

Monday, April 28, 2014 - Friday, May 2, 2014

8 a.m. – 5 p.m.

Monday, May 5, 2014 - Tuesday, May 6, 2014

7 a.m. – 7 p.m.

*Location:*

Pop Gillis Education Support Center

2218 FM 517 East, Dickinson, Texas

## Election Day

Saturday, May 10, 2014

7 a.m. – 7 p.m.

*Location:*

City of Dickinson

City Hall

4403 Highway 3, Dickinson, Texas